

# Run Nexmark Example

This tutorial shows how to run the Nexmark benchmark example. This benchmark simulates an on-line auction system. Since this tutorial needs an installed Odysseus and uses Odysseus Studio, you may have a look at [How to install Odysseus](#) and [Odysseus Studio](#) first.

## 1. Get and Start Nexmark Generator

See [Getting Started with Nexmark](#) for information about nexmark

## 2. Open Odysseus

Next, open Odysseus. If you don't have Odysseus installed yet, have a look here: [How to install new features](#).

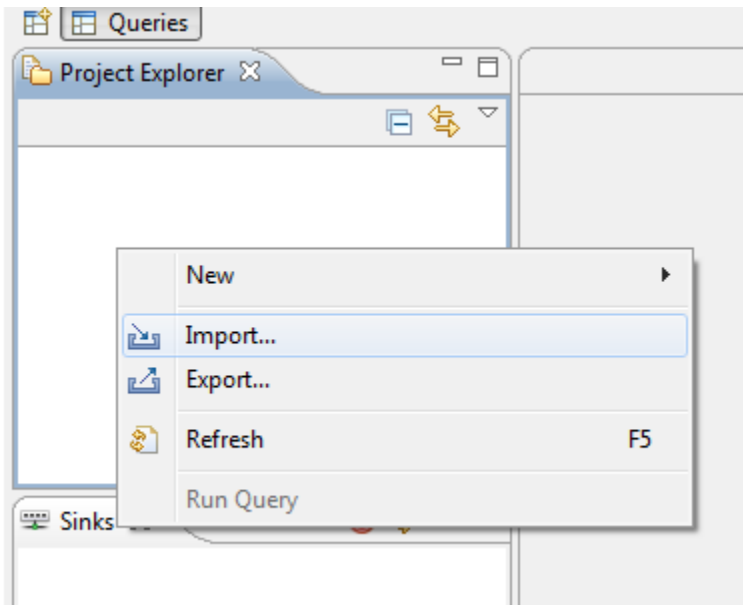
**Important:** As CQL is no longer part of the core system you must install the CQL Feature.

## 3. Import Nexmark-Project

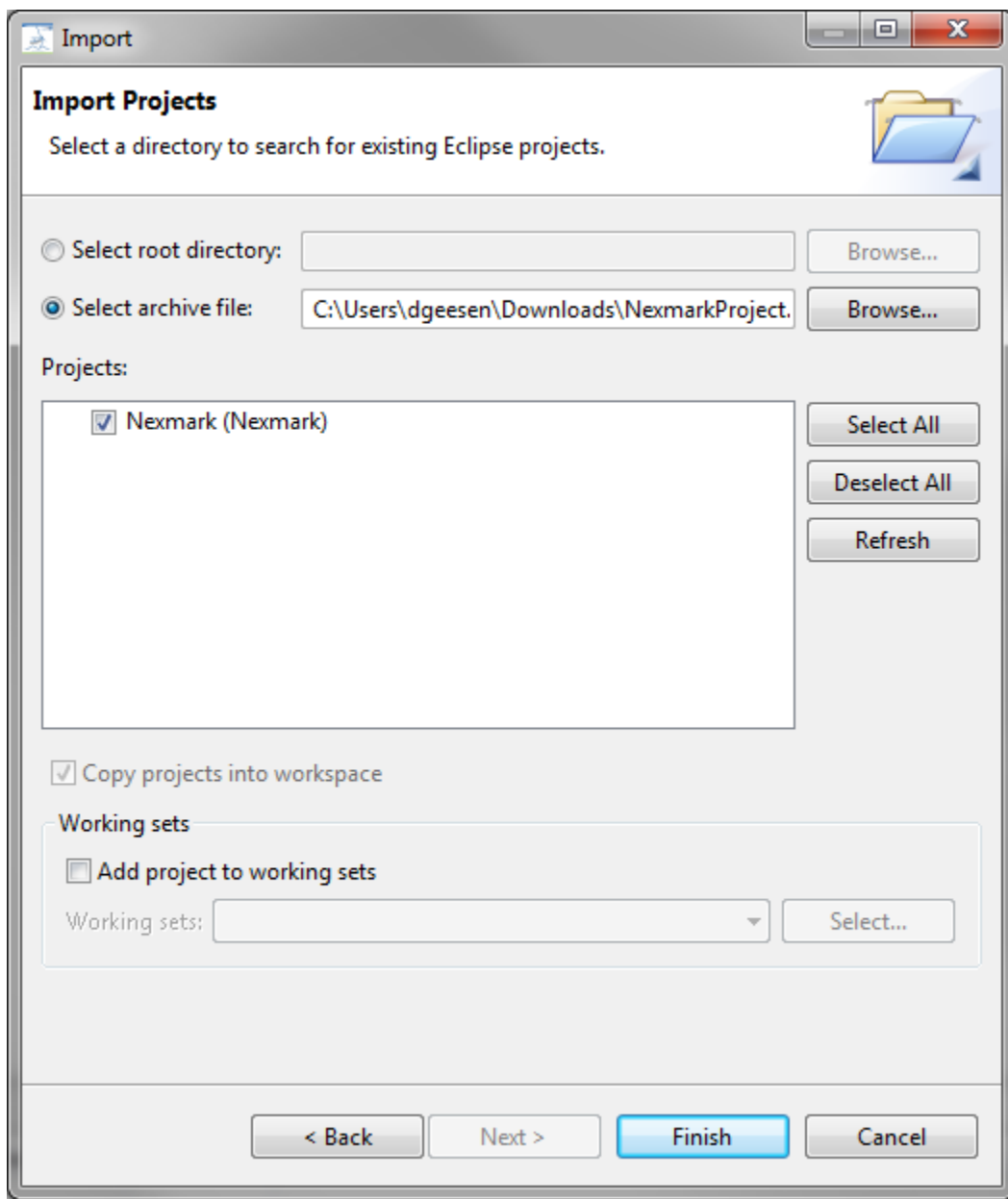
Now, you need a description that tells Odysseus how to connect to the nexmark server. This is down by a [Odysseus Script](#) within a Odysseus Project. You can download this project from

<http://odysseus.informatik.uni-oldenburg.de/download/nexmark/NexmarkProject.zip>

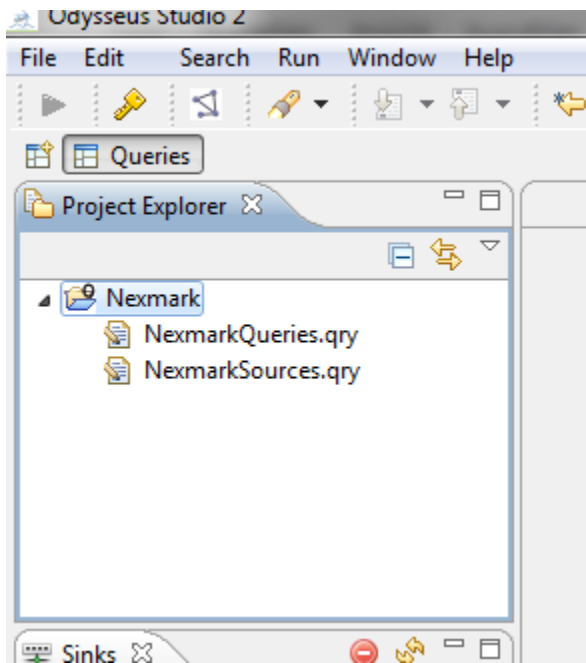
In Odysseus go to the "Project Explorer" and open "Import.." from the context menu (right click with your mouse).



Choose "Existing Project into Workspace" from the "General" folder and click on "Next". Choose "Select archive file" and "Browse..." for the downloaded "NexmarkProject.zip" in your filesystem. You should see "Nexmark" in the "Projects:" field like here:

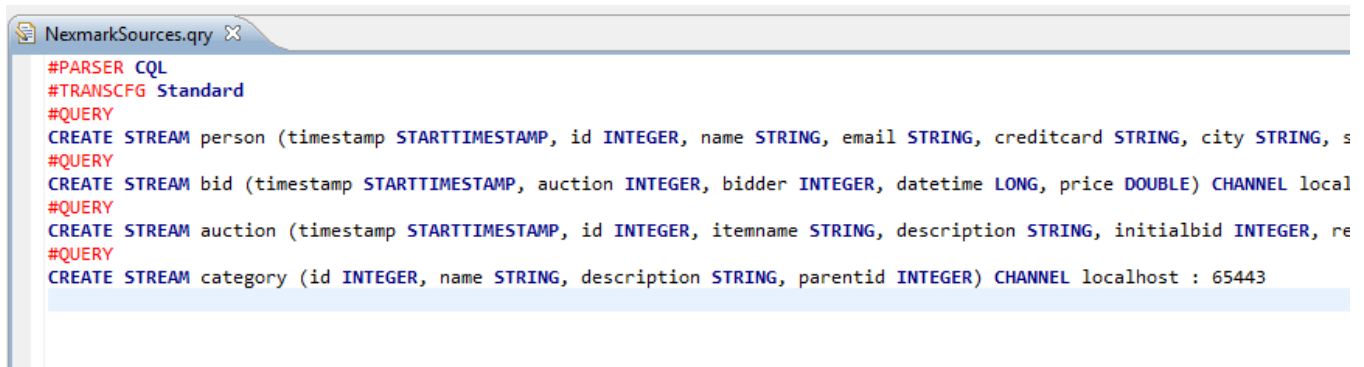


Press "Finish". Now you should see the Project "Nexmark" and two query-files in the "Project Explorer"

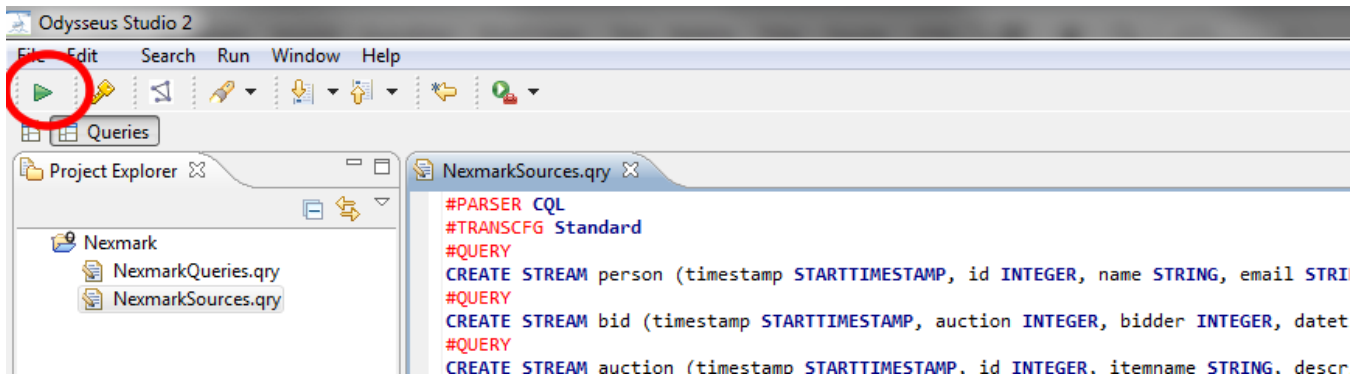


#### 4. Connecting the Nexmark Sources

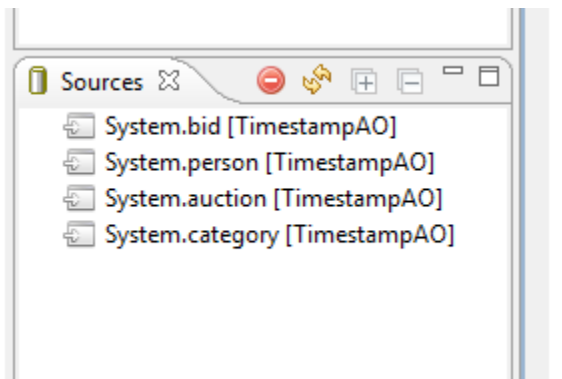
Open the file "NexmarkSource.qry". You should see an [Odysseus Script](#) in your editor:



To run this script, press "Run Query" from the toolbar (or from the context menu, or by CTRL-R):



Now you should see the four sources in the "Sources" view:



Now you can use the sources, even for your own queries.

Remark: If you get an exception you should test, if the nexmark server up and running ([Getting Started with Nexmark](#))

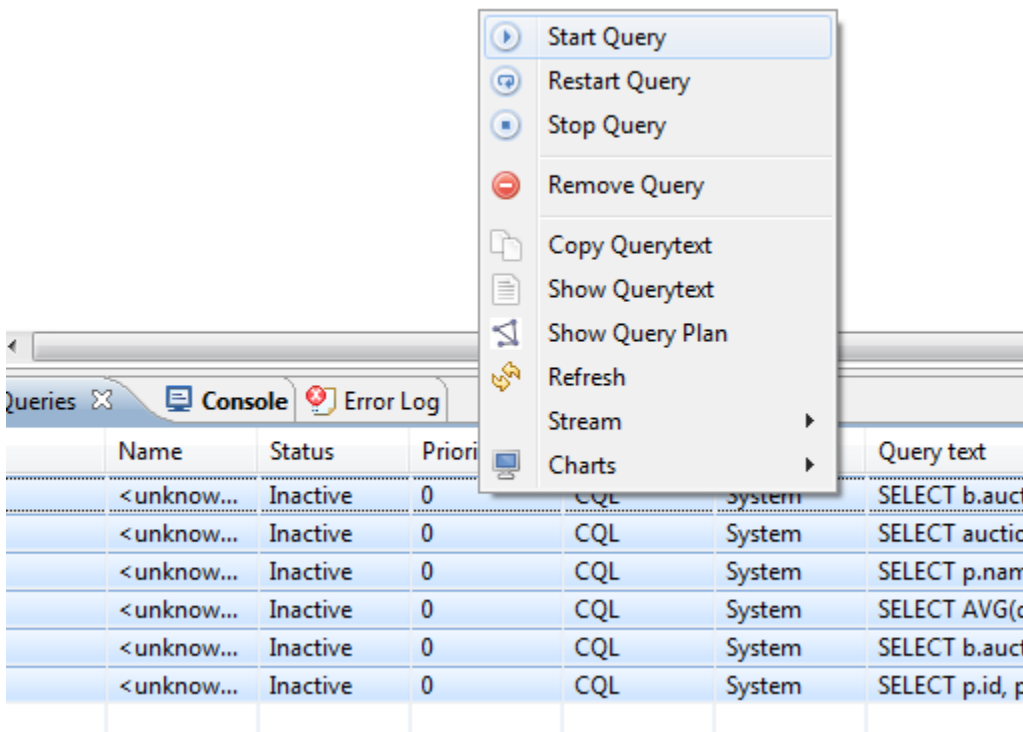
If you want to run the nexmark server on another computer you simply have to change the ip adress in `NexmarkSources.gry`.

## 5. Run Nexmark Example Queries

There are also some example queries that are provided by the `NexmarkQueries` file. You can open and run this file too. Then, you should see 6 queries in the query view.

ID	Name	Status	Priority	Parser	User	Query text
2	<unknown...	Inactive	0	CQL	System	SELECT b.auction, DoIToEur(b.price) AS euroPrice, b.bidder, b.datetime FROM bid [UNBOUNDED] AS b;
3	<unknown...	Inactive	0	CQL	System	SELECT auction, price FROM bid WHERE auction=7 OR auction=20 OR auction=21 OR auction=59 OR auction=87;
4	<unknown...	Inactive	0	CQL	System	SELECT p.name, p.city, p.state, a.id FROM auction [UNBOUNDED] AS a, person [UNBOUNDED] AS p WHERE a.seller=p.id AND a.category < 1...
5	<unknown...	Inactive	0	CQL	System	SELECT AVG(q.final) FROM category[UNBOUNDED] AS c, (SELECT MAX(b.price) AS final, a.category FROM auction [UNBOUNDED] AS a, bid ...
6	<unknown...	Inactive	0	CQL	System	SELECT b.auction, b.price, b.bidder FROM bid [SIZE 1000 ADVANCE 1000 TIME] AS b, (SELECT MAX(price) AS max_price FROM bid [SIZE 1000 ...
7	<unknown...	Inactive	0	CQL	System	SELECT p.id, p.name, a.reserve FROM person [SIZE 12 HOURS ADVANCE 1 TIME] AS p, auction [SIZE 12 HOURS ADVANCE 1 TIME] AS a WHE...

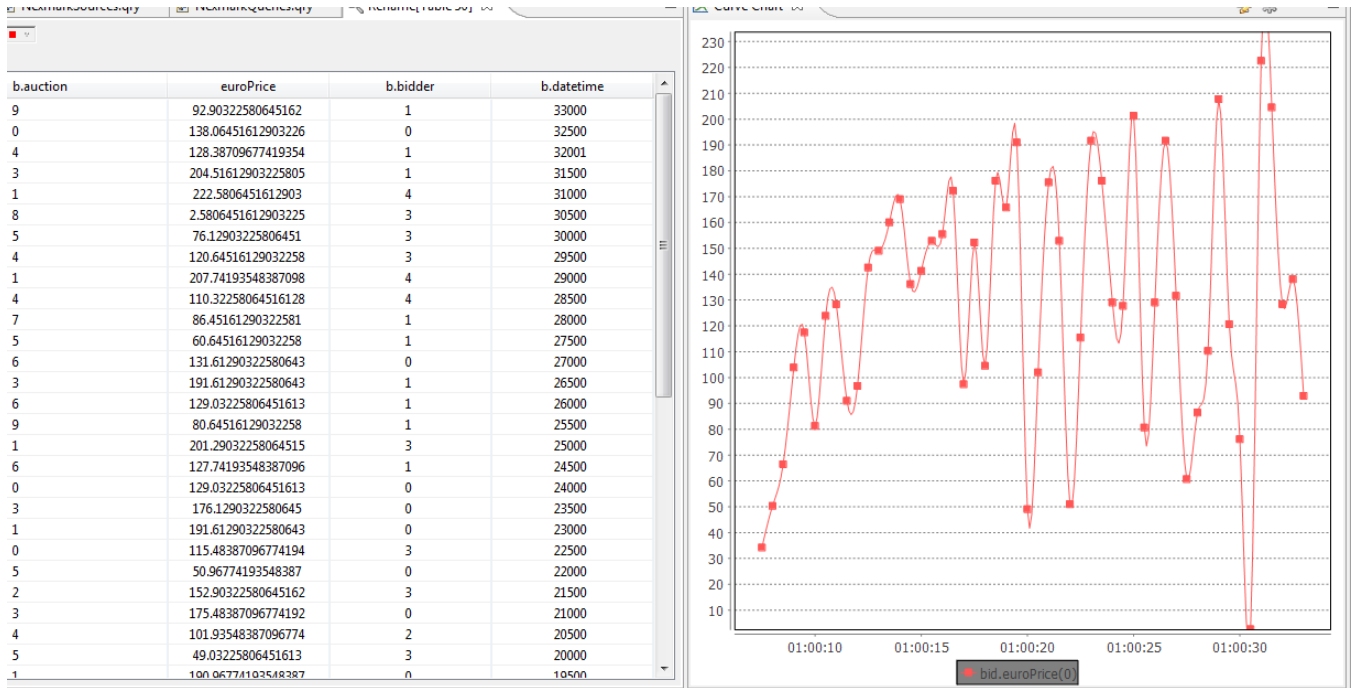
You can also see that the status is inactive. Therefore, the queries are not started yet. To start them all, you can select all queries in the query view and hit the "Start Query" command from the context menu:



Now the queries run and their status should be "Running".

## 6. Look at the data

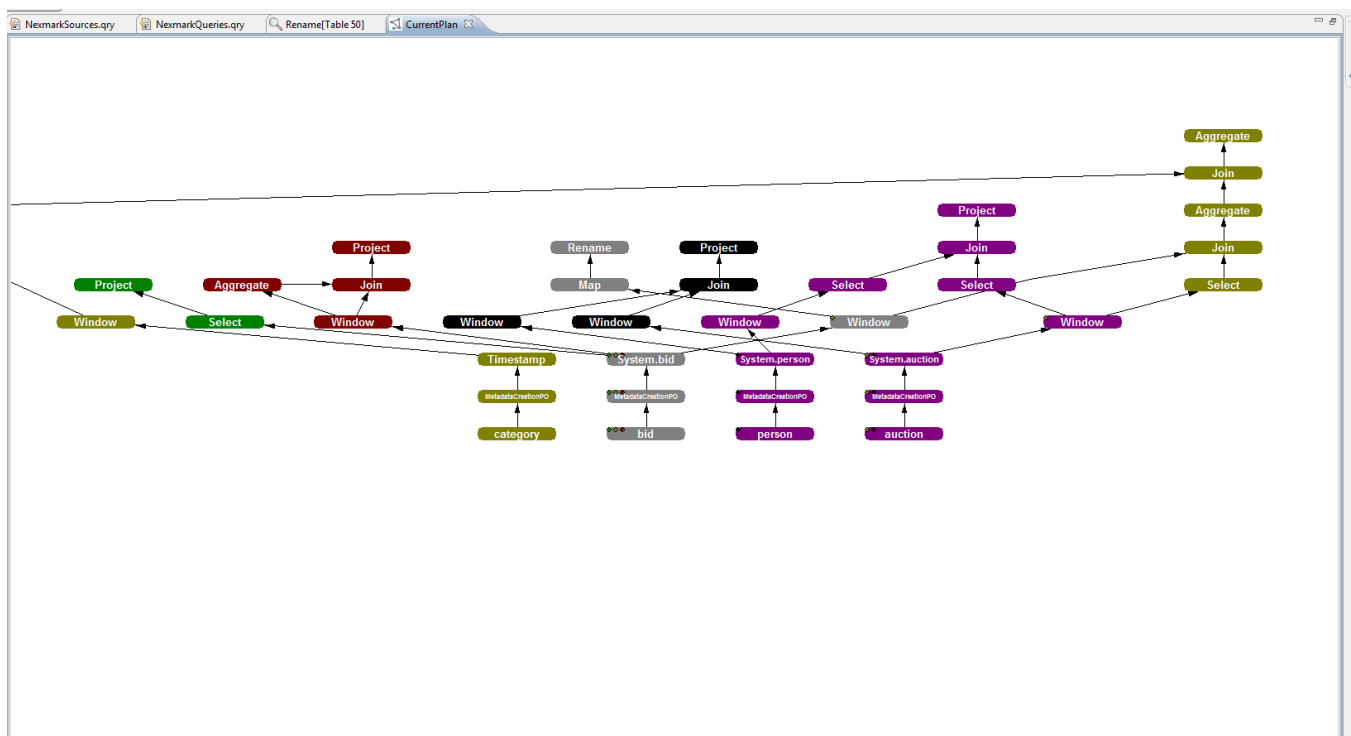
If you may have a look at the data, you can choose a query and open the context menu. Now you can open a table (within the "Stream" sub-menu) that prints all outgoing tuples of the choosen query into a table. Similar to this, you can use a chart (witin the "Charts" sub-menu) to draw diagramms. This could look like the following:



You can also have a look at the query plan to investigate the running operators by hitting the "Active graph" command:



Then you should get a view like:



That's all. Now you can, for example, express your own queries using [Odysseus Script](#)

See this [tutorials](#) for some examples projects explaining Odysseus.